



**WELCOME TO  
BENGALURU'S  
BIGGEST  
SPORTS ADDRESS.**

LAUNCHING  
**PHASE 3** OF BENGALURU'S  
FINEST INTEGRATED  
TOWNSHIP



**Nambiar**  
**DISTRICT 25**





# SPORTS DISTRICT

AT NAMBIAR DISTRICT 25

Come, discover  
the sporty side  
of the Soho Life.

Launching Sports District at Nambiar District 25 - the city's biggest sporting address. Skyrise apartments built to overlook a 20+ acre sporting facility that includes a 2.5+ acre clubhouse.

**FIFA-SIZED  
PITCH**

---

**8 INDOOR  
BADMINTON COURTS**

---

**5 BASKETBALL  
COURTS**

---

**5 TENNIS  
COURTS**

---

**FUTSAL  
COURT**

**7 ACRE  
CLUBHOUSE**

---

**5 PICKLE BALL  
COURTS**

---

**2 SQUASH  
COURTS**

---

**VOLLEYBALL**

**BOX  
CRICKET**

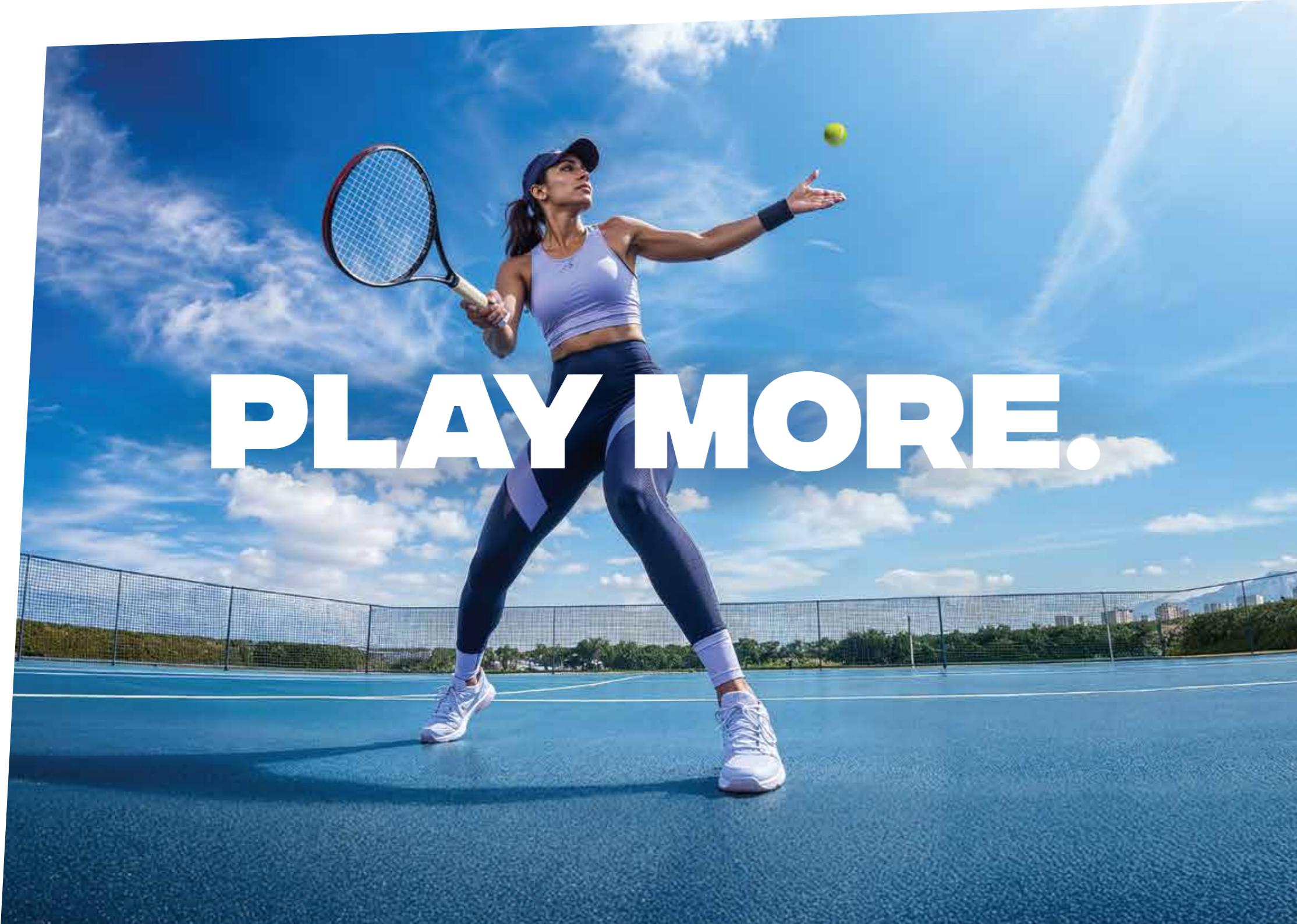
---

**AND MORE**

Enjoy relaxing weekends as you watch your child play on dedicated, world-class facilities and get coaching across sporting disciplines.

Endless sporting amenities, 85% open space, lush greenery: a life built around play.

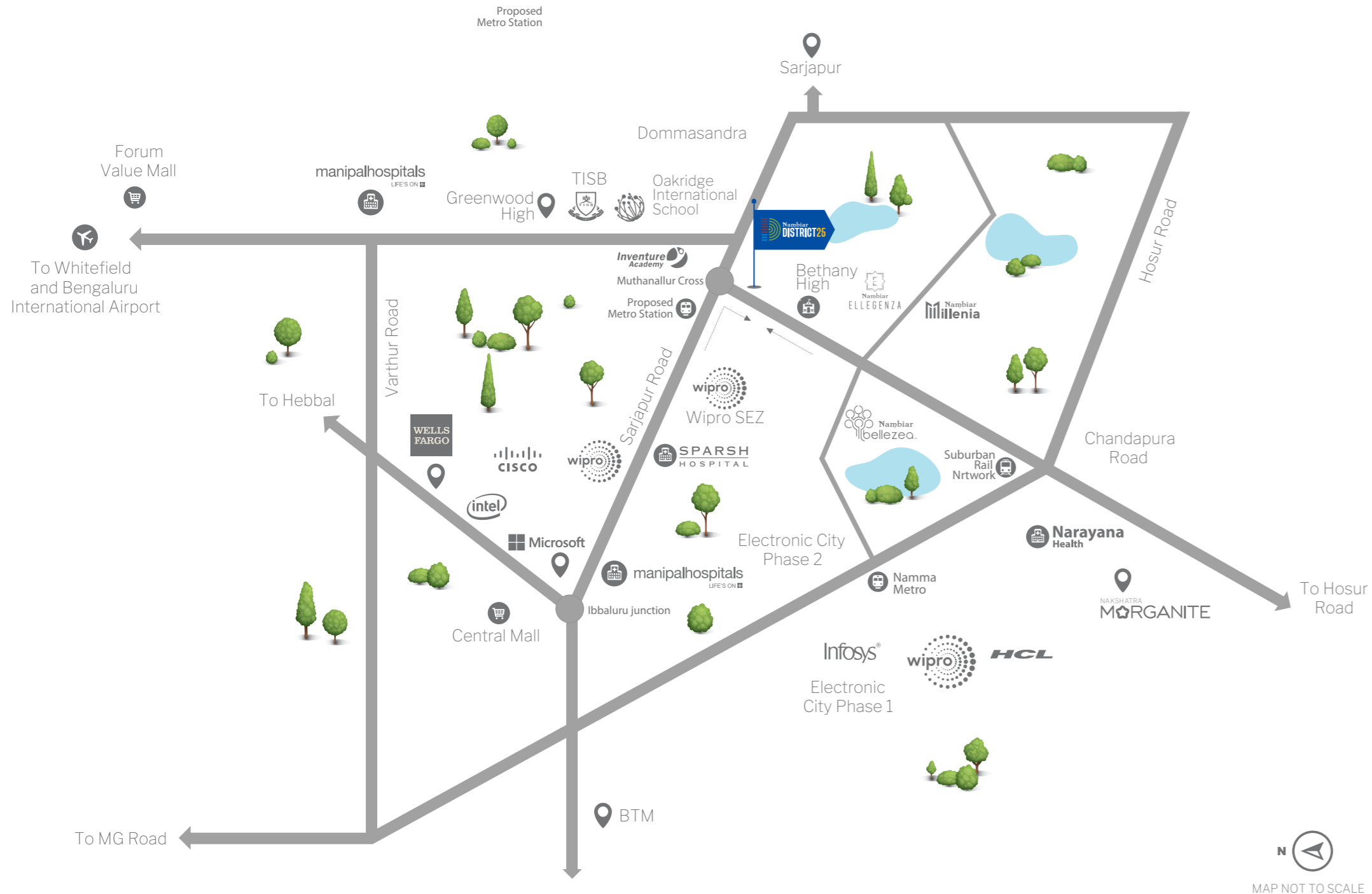




**PLAY MORE.**



**LIVE MORE.**



**10 MINS  
FROM WIPRO,  
CISCO, ITPL**

**40+  
SCHOOLS IN  
THE VICINITY**

**THE NEW BEATING  
HEART OF  
SWIFT CITY**

**AN ADDRESS**

**in Bengaluru's fastest growing  
neighbourhood.**

Located on Chandapura-Dommasandra Road, the project offers excellent connectivity to Bengaluru's major IT hubs and the upcoming Metro corridor. With easy access to key tech parks and the Outer Ring Road office belt, along with the proposed Sarjapur-Hebbal Metro line, it is well positioned for both present-day convenience and future growth.



## 150+ OUTDOOR AMENITIES

### PHASE 1 & 2 AMENITIES

1. Carriage Way With Cycle Lane
2. Verge Tree Line
3. Raised Pedestrian Crossing
4. Treeline
5. Shared Lane
6. Treeline With Benches
7. Podium Driveway
8. Podium Drop-off
9. Parking On Podium
10. Cycle Stand
11. Raised Bus Halt Zone (School Bus Bay)
12. Waiting Area: Semi-Covered In Boulevard
13. Open Pavilions
14. Maidan With Large Trees
15. Santhe Street Along Bus Waiting Area
16. Senior's Hall
17. Hobby Centre
18. Swimming Pool
19. Kids' Pool
20. Poolside Deck
21. Circle Time
22. Martial Arts Dojo/Hobby Centre
23. Tree Court & Sportsmen Plaza
24. Pickleball
25. Basketball
26. Volley27 Tennis Court
28. Plaza
29. Seating Arena
30. Orchard Around Pavilion
31. Rain Tree Plaza
32. Palm Court
33. Pocket Park
34. Heliconia Garden
35. Sacred Flower Garden
36. Medicinal Plant Beds
37. Multipurpose Land with Peripheral Mounds
38. Pollinator Garden, Butterfly Garden & Walkway
39. Hammock Garden

### PHASE 3 AMENITIES

40. Nocturnal Garden
41. Bamboo Groves Around Parking
42. Tree Courts
43. Pet Pocket Park
44. Multipurpose Pavilion
45. Yoga Deck
46. Trampoline
47. Kid's Play Zones
48. Swing Plaza
49. Roof Deck
50. Exercise Garden
51. Laughter Club
52. Outdoor Work
53. Soho Zone-Flea Market
54. Arrival Courts

### CLUBHOUSE OUTDOOR AMENITIES

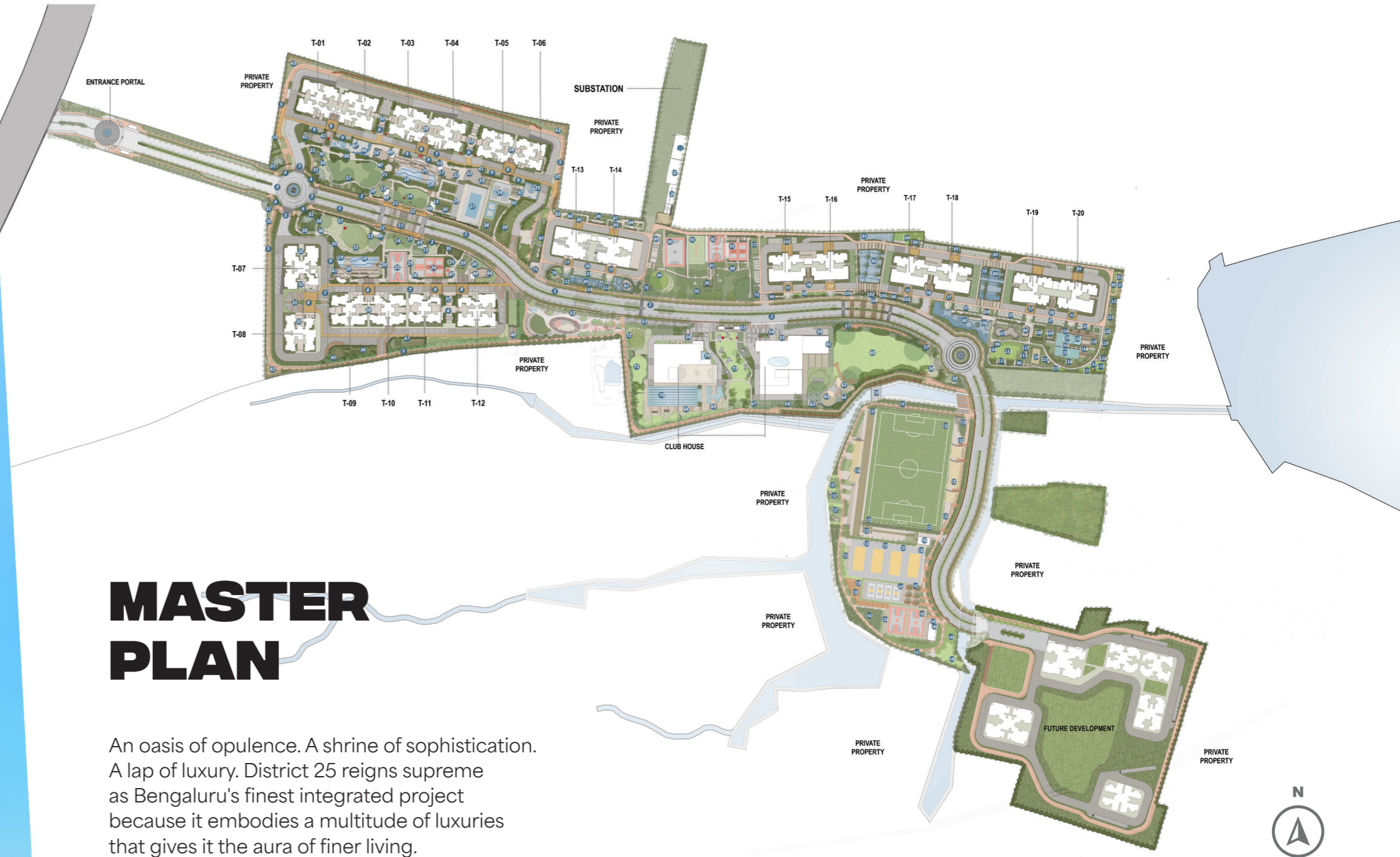
55. Sculpture Court
56. Food Truck Zone
57. Promenade
58. Pavilion
59. Activity Zone
60. Great Lawn
61. Projection Wall
62. Play Area
63. Kid's Play Zone 1
64. Kid's Play Zone 2: Tot Lot
65. Tree Court
66. Two-wheeler Parking
67. Truck Parking
68. Poolside Deck
69. Family Pool
70. Olympic-length Pool
71. Party Lawn
72. Oval Glade
73. Green Buffer
74. Water Court

### PHASE 3 AMENITIES

75. Rain Tree Plaza
76. Podium Driveway
77. Podium Drop-Off
78. Pocket Park
79. Elders Plaza with Reflexology Trail
80. Children's Play Area
81. Tot-Lot
82. Ecology Trail
83. Mindful Movement Area
84. Garden Workspace
85. Vine Trellis with Sitout
86. Living Corridor
87. Garden Lounge
88. Pollinator Garden
89. Outdoor Gym
90. Futsal Court with Stepped Seating
91. Box Cricket
92. Basketball Court
93. Pickle Ball Court with Stepped Seating
94. Oval Glade
95. Native Tree Thicket
96. Park Pavilion
97. Sportsmen Plaza
98. Recovery Lawn
99. Aromatic Plants
100. Heliconia Garden
101. Medicinal Plant Beds
102. Palm Plaza
103. Seater Nook
104. Edible Garden & Fruit Bearing
105. Fern Garden
106. Maze
107. Skating Rink
108. Podium Pavilion
109. Tree Court
110. Plaza
111. Maidaan
112. Garden Seater
113. Orchards
114. Beach Volleyball
115. Swimming Pool
  - A. Swimming Pool Deck
  - B. Lounge Pool

### SPORTS AREA AMENITIES

116. Green Thicket
117. Hammock Garden
118. Yoga Deck
119. Yoga Lawn
120. Herb Garden
121. Urban Food Forest
122. Pollinator Garden with Seater
123. Pet Park
124. Bus Stop
125. Visitor Parking
126. Transformer Yard
127. DG Yard
128. OWC
129. Entry Plaza
130. Football Court
131. Athletic Track
132. Long Jump Track with Warmup Area
133. Sports Promenade
134. Arena
135. Feature Wall
136. Toilet Block
137. Streamside Pocket Gardens
138. Viewing Deck
139. Tennis Court
140. Groove of Recovery
141. Indoor Badminton Courts
142. Sportsmen Plaza
143. Basketball Court
144. Changing Point
145. Hydration Point
146. Yoga Lawn
147. Riparian Edge
148. Groove of Calmness
149. Service Yard
150. Bridge
151. STP



# MASTER PLAN

An oasis of opulence. A shrine of sophistication. A lap of luxury. District 25 reigns supreme as Bengaluru's finest integrated project because it embodies a multitude of luxuries that gives it the aura of finer living.

# VILLA-STYLE LIVING IN APARTMENTS

Residences with no common walls, sunlit windows with large picturesque balconies and exclusive elevator access. In addition, a dedicated garbage chute, ventilated lobbies and naturally-lit vestibules.

2, 3, 4 & 4.5 BHK homes loaded with every possible comfort. Truly villa-style living in a skyscraper.



Artistic impression



Artistic impression

# SUSTAINABLE LUXURY

Curated gardens and 3500+ trees native to Bengaluru.

Designed with sustainable principles like rainwater harvesting and EV charging points\*, District 25 truly defines what we at Nambiar like to call Modern Living.

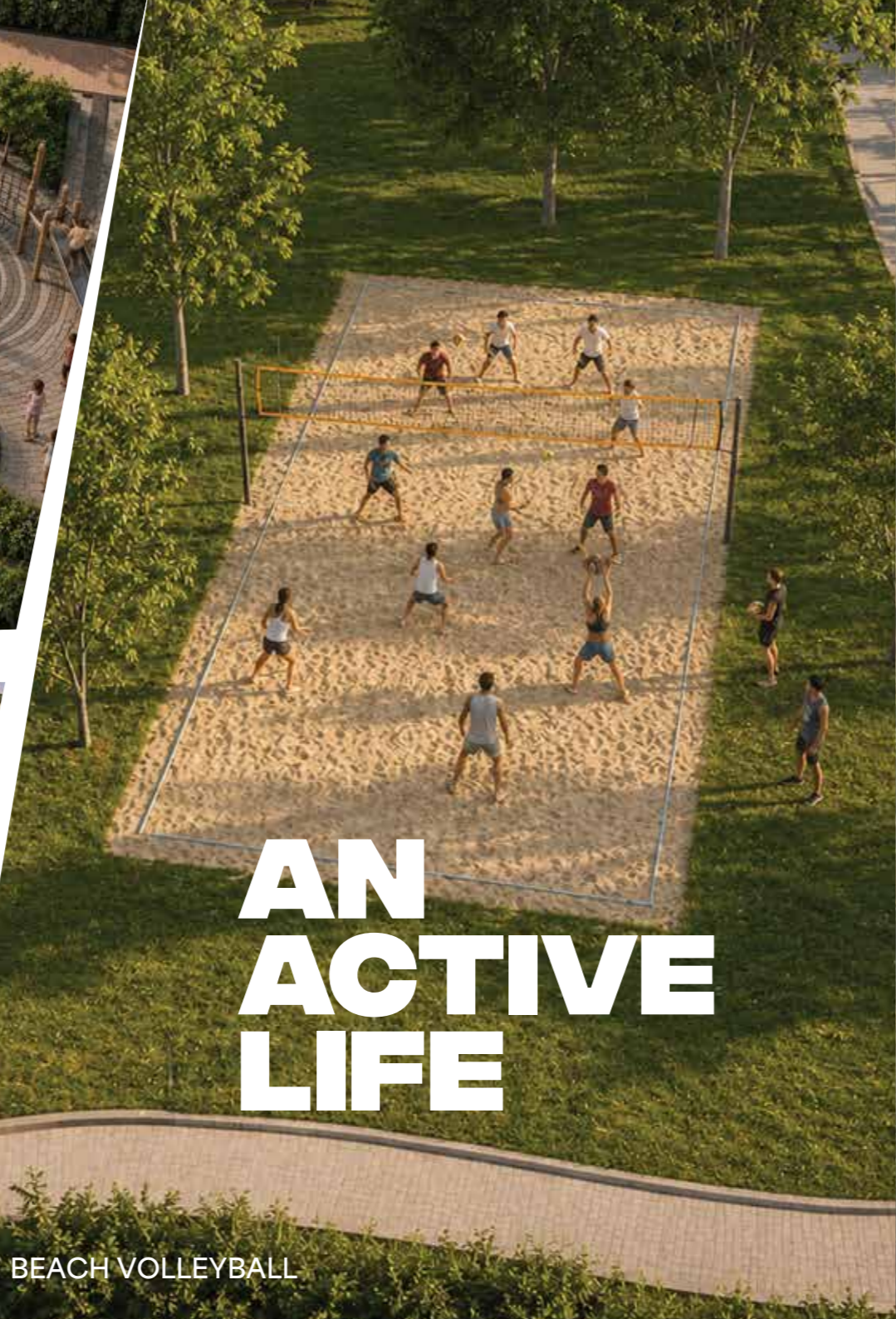
\*T&C apply.



ELDERS PLAZA WITH REFLEXOLOGY TRAIL



SKATING RINK AND GARDEN WORKSPACE



BEACH VOLLEYBALL



YOGA LAWN AND DECK



MULTI-SPORT HUB

**AN  
ACTIVE  
LIFE**

**IN THE  
GREAT  
OUTDOORS**

# UNIT TYPOLOGY DISTRIBUTION



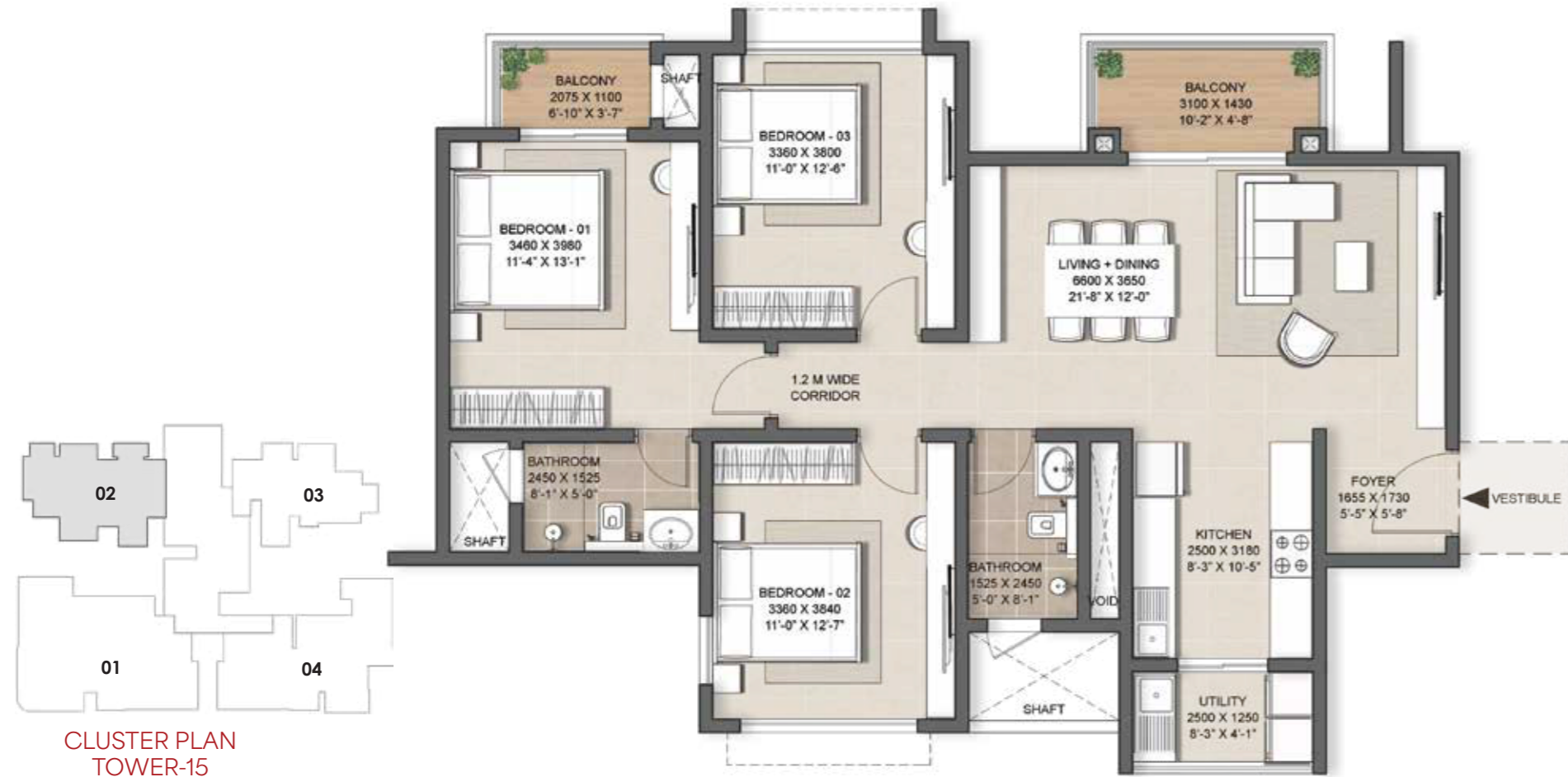
## 2 BED 2T-UNIT 01 (FLOOR PLAN)



SALE AREA - 117.04 sqm / 1260 sqft  
 CARPET AREA - 77.87 sqm / 838 sqft  
 SKYDECK / BALCONY AREA - 6.14 sqm / 66 sqft



**3 BED 2T  
(FLOOR PLAN)**



**3BED 3T-UNIT L-01  
(FLOOR PLAN)**



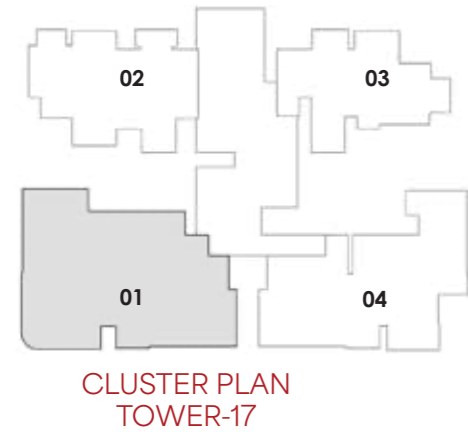
SALE AREA - 140.99 sqm / 1518 sqft  
 CARPET AREA - 93.76 sqm / 1009 sqft  
 SKYDECK / BALCONY AREA - 6.49 sqm / 69 sqft



SALE AREA - 191.35 sqm / 2060 sqft  
 CARPET AREA - 123.77 sqm / 1332 sqft  
 SKYDECK / BALCONY AREA - 15.52 sqm / 167 sqft



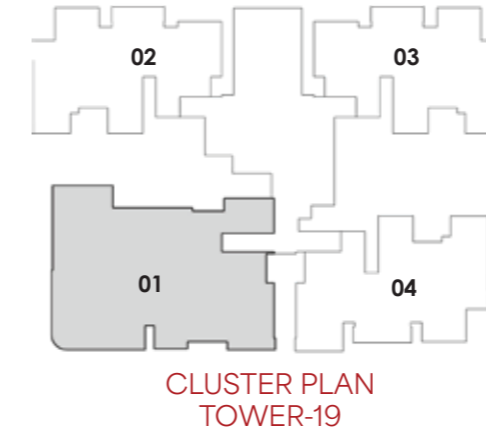
**4 BED 4T  
(FLOOR PLAN)**



SALE AREA - 242.74 sqm / 2613 sqft  
 CARPET AREA - 161.37 sqm / 1736 sqft  
 SKYDECK / BALCONY AREA - 18.17 sqm / 195 sqft



**4 BED 5T  
(FLOOR PLAN)**



SALE AREA - 276.85 sqm / 2980 sqft  
 CARPET AREA - 177.53 sqm / 1910 sqft  
 SKYDECK / BALCONY AREA - 25.03 sqm / 269 sqft





Club SOHO  
**THE BUZZING HUB  
OF DISTRICT 25**

**The epicentre of District 25:**  
The clubhouse is a sprawling 2.5 lakh+ sft space packed with world-class indoor sports, fitness and recreational amenities.

Unique amenities like an observatory, indoor pool, a space for creche, spa, restaurant, saloon, grocery store, shops, clinic, café, co-working space, central kitchen, library, yoga hall, AV room and more make our clubhouse a fitness centre, cultural hub and community meeting ground, all rolled into one.

Explore your sporty side with courts, grounds, tracks, and more - for every sport you can imagine.



Artistic impression

📞 702 603 4444  
[www.nambiarbuilders.com](http://www.nambiarbuilders.com)

**Nambiar District 25**  
Chandapura Dommasandra Road,  
Dommasandra, Bengaluru - 562 125

**Head Office**  
2<sup>nd</sup> Floor, PR Business Centre, Above Croma, Outer Ring Road,  
Kadubeesanahalli, Marathahalli Post, Bengaluru - 560 103

RERA Registration no. PRM/KA/RERA/1251/308/PR/260526/008686  
Images are indicative. For representation only.

Version 1 : July 2026

The information depicted herein viz., master plans, floor plans, furniture layout, fittings, illustrations, specifications, designs, dimensions, rendered views, colours, amenities and facilities etc., are subject to change without notifications as may be required by the relevant authorities or the Developer's architect, and cannot form part of an offer or contract. Whilst every care is taken in providing this information, the Developer cannot be held liable for variations. All illustrations and pictures are artist's impressions only. The information is subject to variations, additions, deletions, substitutions and modifications as may be recommended by the company's architect and/or the relevant approving authorities. The Developer is wholly exempt from any liability on account of any claim in this regard. (1 square metre = 10.764 square feet). E & OE. All dimensions and calculations are done in metric system (M/Sq.m), and imperial system (Ft/Sq.ft) shown is for reference only. All dimensions indicated in the drawing are from unfinished surfaces, excluding plaster thickness and tile thickness. For ceiling clear height of all rooms refer sales agreement.